

Gateway Arch KHSAA



Oil Pattern Distance: 42 Feet **Reverse Brush Drop:** 38 Feet **Oil Per Board:** 45 uL
Forward Oil Total: 14.265 mL **Reverse Oil Total:** 11.655 mL **Volume Oil Total:** 25.92 mL
Forward Boards Crossed: 317 Boards **Reverse Boards Crossed:** 259 Boards **Total Boards Crossed:** 576 Boards

	Start	Stop	Loads	Speed	Crossed	Start	End	Feet	T.Oil
1	2L	2R	4	18	148	0.0	7.6	7.6	6660
2	10L	10R	5	18	105	7.6	20.3	12.7	4725
3	11L	11R	1	18	19	20.3	22.8	2.5	855
4	12L	12R	1	18	17	22.8	25.3	2.5	765
5	13L	13R	1	18	15	25.3	27.8	2.5	675
6	14L	14R	1	18	13	27.8	30.3	2.5	585
7	2L	2R	0	22	0	30.3	37.0	6.7	0
8	2L	2R	0	26	0	37.0	42.0	5.0	0

Conditioner:
 Type In or Select
 One

 TransferType:
 Type In or Select
 One

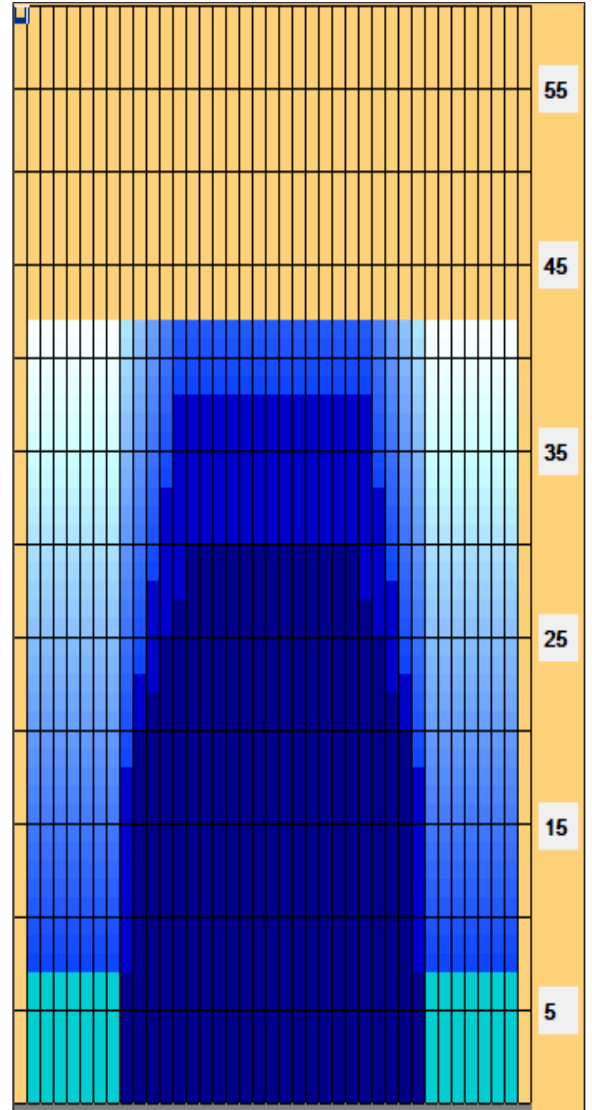
	Start	Stop	Loads	Speed	Crossed	Start	End	Feet	T.Oil
1	2L	2R	0	30	0	42.0	38.0	-4.0	0
2	13L	13R	2	18	30	38.0	32.9	-5.1	1350
3	12L	12R	2	18	34	32.9	27.8	-5.1	1530
4	11L	11R	2	18	38	27.8	22.7	-5.1	1710
5	10L	10R	2	18	42	22.7	17.6	-5.1	1890
6	9L	9R	5	14	115	17.6	7.7	-9.9	5175
7	2L	2R	0	14	0	7.7	0.0	-7.7	0

Forward

 Reverse

 Combined

 Buff



Item	3L-7L:18L-18R	8L-12L:18L-18R	13L-17L:18L-18R	18L-18R:17R-13R	18L-18R:12R-8R	18L-18R:7R-3R
Description	Outside Track:Middle	Middle Track:Middle	Inside Track:Middle	Middle: Inside Track	Middle:Middle Track	Middle:Outside Track
Track Zone Ratio	6.5	1.86	1.01	1.01	1.86	6.5

